

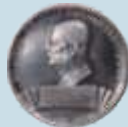
SPECIFICATIONS

Model		MU4501
Engine	Type	Kubota V2403-M-DI-E3, Inline FIP, 4 Cylinder, Liquid Cooled
	Displacement	2434 cc
	Air Filter	Dry Type, Dual Element
	Clutch	Double Clutch
Transmission	Gear Box	8 Forward + 4 Reverse Main Transmission Synchronesh
	Speeds	Forward Min 3.0 - Max 30.8 kmph Reverse Min 3.9 - Max 13.8 kmph
Brakes	Type	Oil Immersed Disc Brakes
Front Axle	Type	Fix / Variable (Optional)
Hydraulics	Lifting Capacity	1640 kgf (at lift point)
Steering	Type	Hydraulic Double acting power steering
Power Take Off	Type	Independent, Dual PTO
PTO RPM		STD : 540 @2484 ERPM ECO : 750 @2481 ERPM
Wheels & Tyres	Front	6 x 16 / 7.5 x 16 (Optional)
	Rear	13.6 x 28 / 14.9 x 28 (Optional)
Electrical System	Battery	12 Volt
	Alternator	40 Amp
	Starter Motor	12 Volt, 2.2 kW
Dimensions & Weight	Total Weight	1850 Kg
	Wheel Base	1990 mm
	Overall Length (without 3P)	3100
	Overall Width	1865
	Ground Clearance	405
Others	Turning Radius with Brakes	2.80
	Deck Design	Full flat
	Fuel Tank Capacity	60 Liters
Factory Fitted Option	Front Tyre	7.5 x 16
	Rear Tyre	14.9 x 28

Calculated according to our criteria. The actual capacity you achieve may be different.
The specifications, information, and appearance of the machines herein are subject to change without notice.

Quality you can trust on

Kubota received the Deming Prize which is the highest proof of recognition of major advances in quality improvement. Kubota has also received the ISO9001 Certification which is the international standard of quality management systems, the ISO14001 Certification which is the international standards related to environment management, and the OSHAS 18001 Certification which is the international assessment series of occupational health and safety systems.



The Deming Prize



OSHAS 18001 Certification



ISO9001 Certification



ISO14001 Certification

Kubota Agricultural Machinery India Pvt Ltd.

No.94, TVH BELICIAA, TOWER- 1,
8th floor, MRC Nagar, Chennai - 600 028
Tel : +91 - 44 - 6104 1500 Fax : 044 6104 1600
Web : www.kubota.co.in, Follow Us :

Toll Free : 1800 309 1694



JAPAN'S NO.1* TRACTOR COMPANY

MU

MU4501 (45HP Category)

Comfort • Performance • Durability



Kubota Quad-4
Piston



Synchronesh
Transmission



Dual Acting
Power Steering



Shuttle
Shift

KUBOTA/ FEBRUARY 2023/ ENGLISH

*Disclaimer: A per Japan's Journal GYOKAI, Kubota ranks No.1 (Agri Machinery) for the year 2021 in turnover

*terms & conditions apply

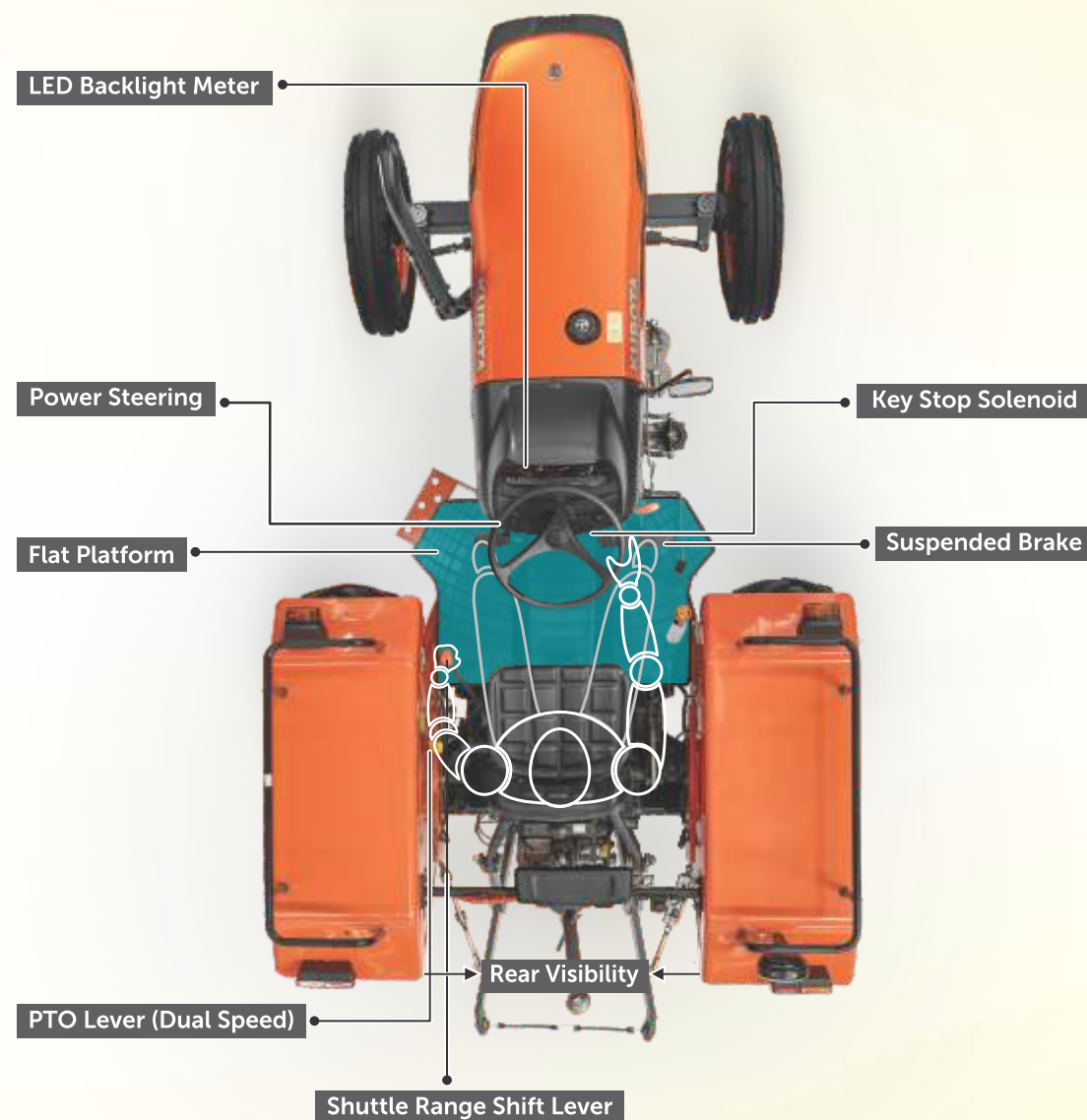
Operator-friendly Driving System

Operation devices are located for more efficient and comfortable work

MU4501

Equipped with Operator Friendliness & Comfort for agriculture operations

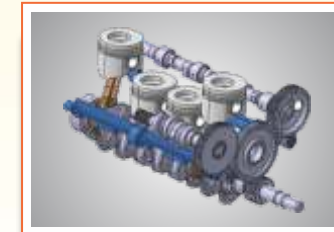
THE POWER OF COMFORT



ENGINE

Kubota Quad-4 Piston

Quad Piston ring which reduces friction and ultimately improves fuel efficiency



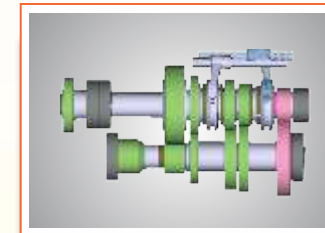
Balancer Shaft

Less Vibration & Low Noise

SMOOTH TRANSMISSION

Synchromesh Transmission

Smooth engaging of the gears when shifting



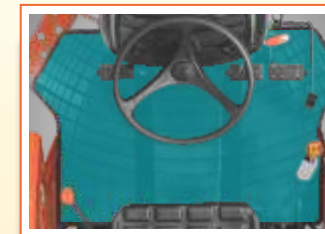
Shuttle Shift

Changing of forward & backward direction is made easy

COMFORT

Flat Platform

Easy get in & get down without any interference



Suspended Brakes

Improves Operator Comfort



Dual Acting Power Steering

Excellent turning performance



Key Stop Solenoid

Operator can stop the engine only by turning key



LED Display

Indicators can be easily recognised by Operators during night



Single Piece Bonnet

Easy to Open & use better accessibility to engine compartment



Independent Dual PTO

A lever allows the operator to simply change PTO speed (standard 540 and economy 750)



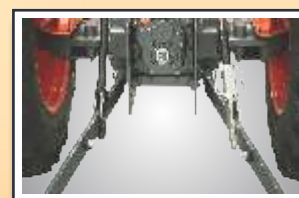
Widest Fender

Design for easy & stable baggage loading



Front Axle

Thickest axle in this segment



High Hydraulic Lift Capacity

High lift capacity enough for the implements used on these tractor



4 Fin Clutch

33% better Durability Compare to regular Clutch



World's Top Class High Quality Oil Seals

The oil seals are made by reliable Japanese seal manufacturing company